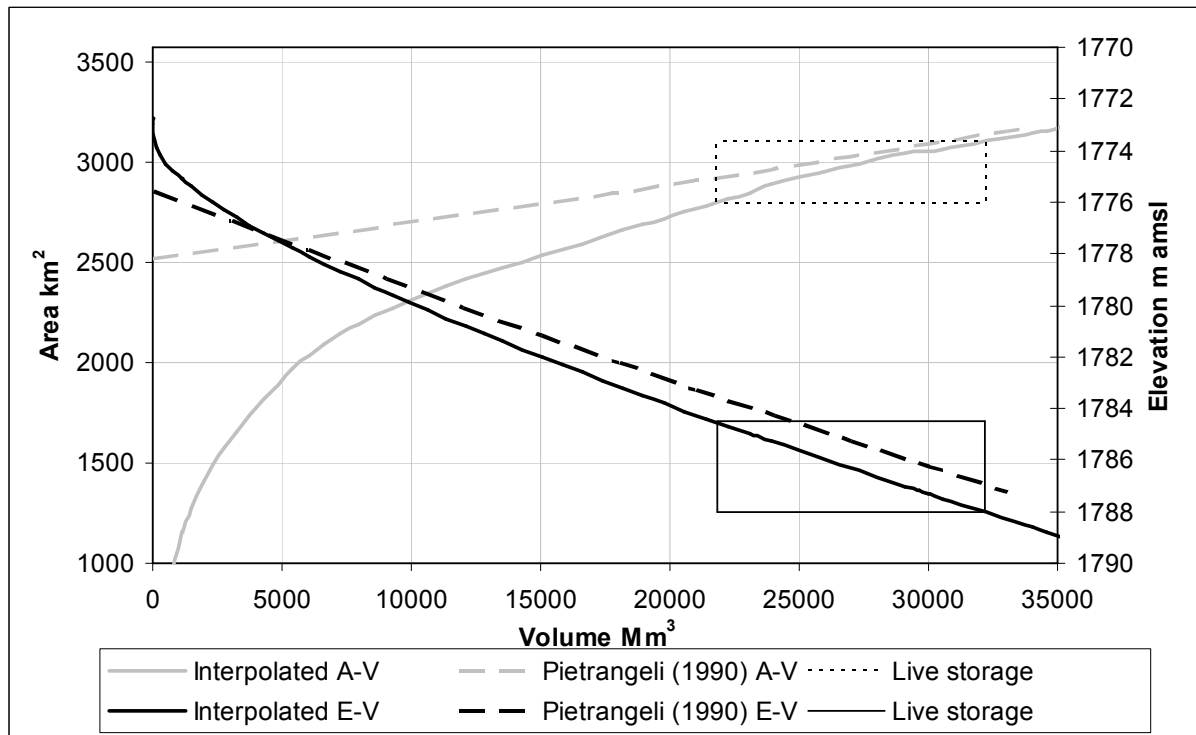
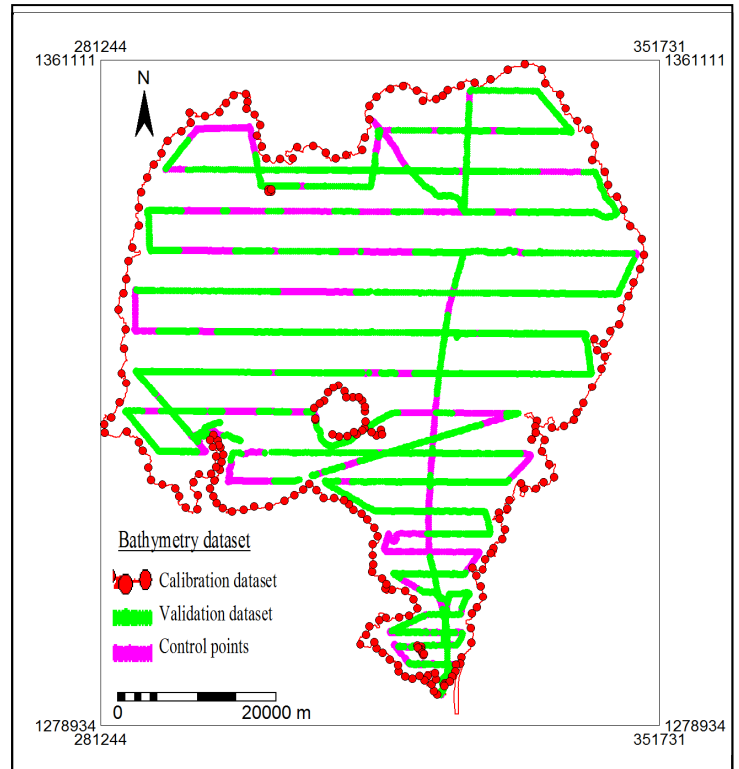
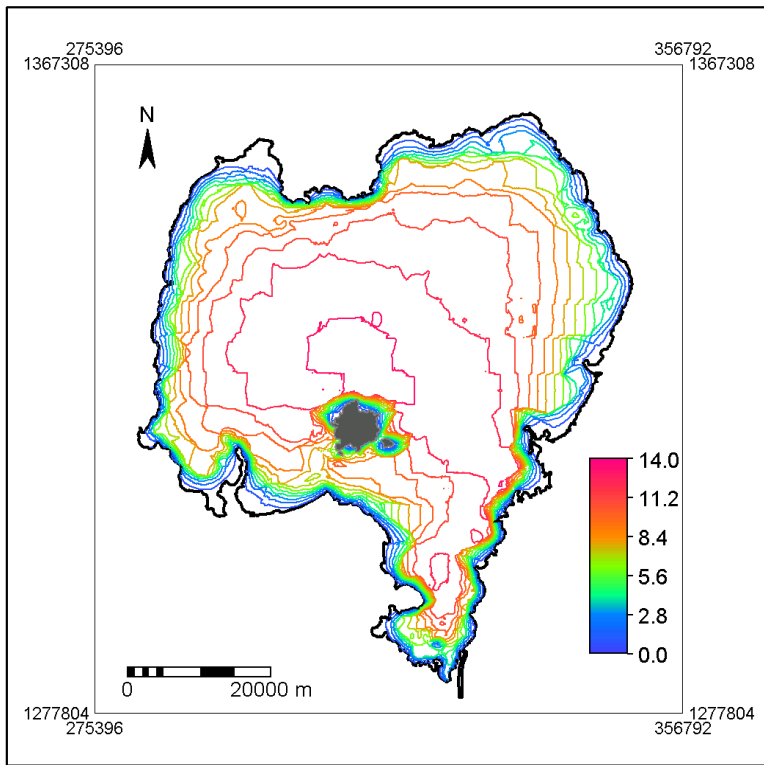


Bathymetry data of 2006 by Kaba (2006) was interpolated by including 425 sample control points with elevation 1786.30 m amsl that are along the lake boundary and boundary of islands extracted from Shuttle Radar Topography Mission Digital Elevation Model (SRTM DEM), elevation value 1786.30 m amsl is the average lake gauge level of 11 days from Feb 11-22, 2000 where SRTM DEM mission was conducted.



Area-Volume and Elevation-Volume relation of Lake Tana

By Abeyou wale
 Bahir Dar University, Bahir Dar Ethiopia
Abeyou_wale@yahoo.com

Full procedures will be available soon.